



# PRECISION

## DRILLING AUSTRALIA

Exploration 

Geotechnical 

Environmental 

Hydro & Water Well Drilling 

# CAPABILITY STATEMENT

# 2022

 Managing Director: Mathew Feeney  
e: [precisiondrillingaustralia@gmail.com](mailto:precisiondrillingaustralia@gmail.com)  
m: 0425 479 150

 Operations Manager: Ryan Wilhelm  
e: [precisiondrillingaustralia@gmail.com](mailto:precisiondrillingaustralia@gmail.com)  
m: 0499 304 871

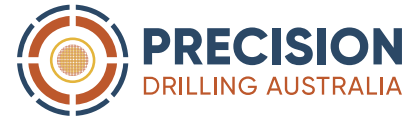
a: 240 Clayton Road, Helena Valley, WA 6056 | [www.precisiondrillingaustralia.com.au](http://www.precisiondrillingaustralia.com.au)



## OUR PURPOSE

“To use the highest quality equipment and skilled staff to ensure quality service outcomes to meet our client’s expectations”.

# ABOUT US



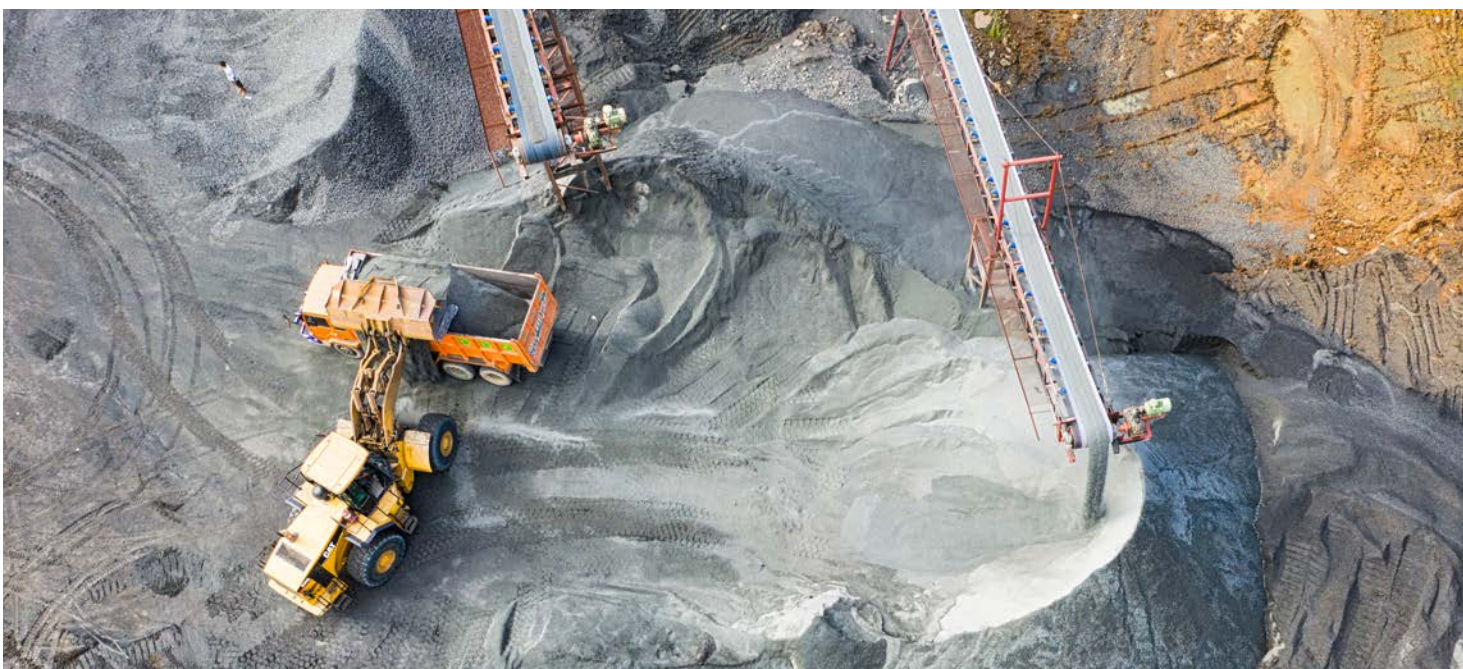
Precision Drilling Australia (PDA) is a new generation of drillers in Western Australia, providing services in Exploration, Geotechnical, Environmental and Hydro and Water Well Drilling. We have state of the art equipment to ensure quality service and to meet our client's expectations.

With experience in all aspects of Exploration, Geotechnical, Environmental drilling, and Hydro and Water Well Drilling, we are here to look after our clients in a professional, ethical, and reliable manner, while maintaining safe and environmentally responsible practices.

With over 25 years of combined experience in the industry, we know the superior service that a small and committed team can provide. From start-up junior exploration companies to large corporations working across brownfields and greenfields projects throughout Australia, the value of building a strong reputation for teamwork and dependability is always our priority.

Our goal is to dedicate sufficient time into skilling up our team, as well as research our operations in order to increase efficiency in our workforce prior to expanding to the operational team. We are firm believers in the 'quality' of staff over 'quantity'.

We aim to work alongside our clients to help them achieve their goals and grow their companies while improving our processes and procedures along the way. We take on projects in some of the most remote and isolated areas in Australia and do so in a manner that is respectful of the environment.



# DRILLING & SAMPLING CAPABILITY

Precision Drilling is a multifaceted drilling contractor and industry leader in Exploration, Geotechnical, Environmental, Hydro and Water Well Drilling services, and are experienced in a wide range of testing and instrumentation equipment. We have purchased state of the art equipment to ensure quality service at the level our clients expect, and we demand.

Our field teams include drillers and offsiders with extensive experience in a wide variety of drilling techniques, including Diamond Coring, Reverse Circulation, Aircore, Hollow Augers, Mud Rotary and Air/Hammer methods.



## DIAMOND DRILLING

Depth Capability: NQ=1200m,  
HQ=800m, PQ=350m



## REVERSE CIRCULATION DRILLING

Depth Capability: 300m



## LIGHT REVERSE CIRCULATION/ AIR CORE DRILLING

Depth Capability: 100m Aircore,  
200m Light RC



## MUD ROTARY OR AIR/HAMMER

Depth Capability: 300m

# COMMITMENT TO OUR CLIENTS

At Precision Drilling, we pride ourselves on our ability to establish and maintain good relationships with our clients. Successful project outcomes for our clients is our primary focus. All drilling is conducted strictly to individual specifications.

---

Precision Drilling's commitment to excellence includes maintaining a 'safety-first' culture and a high standard of professionalism within our field crews. Our supervising drillers assist with logistics management, to capture all safety compliance data, and the submission of all required reporting in a timely fashion. Management also travels to the sites regularly to oversee drilling

projects and to communicate with on-site staff, allowing us to maintain a proactive, hands-on approach to each contract.

Managing Director, Mathew Feeney has begun growing the company at a sustainable rate to ensure it never loses its client-centered focus. Our approach is the foundation of Precision Drilling's reputation for exceptional quality and service.

# COMMITMENT TO OUR STAFF

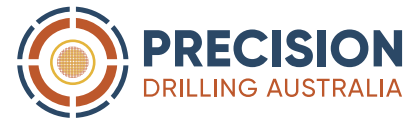
Employee safety is at the forefront of everything we do at precision drilling Australia. Our safe systems of work are maintained to ensure potential hazards are identified and control measures implemented to minimise the day to day risks to our staff and client's safety and wellbeing.

---

Precision Drilling provides its employees with both on-site and external training programs to expand their knowledge and skills within the drilling industry. We invest in our staff with ongoing learning opportunities and value their contribution to the company.

Our commitment to employee safety and training is the reason Precision Drilling attracts the most experienced and professional drilling industry personnel.

# HEALTH & SAFETY ENVIRONMENT



Precision Drilling Services operates a comprehensive Safety Management System to ensure that all hazards identified in the workplace or site, and potential occurrences detrimental to personnel, operations, assets, and the environment and their impact on business performance are identified and effectively controlled.

Precision Drilling Services has a comprehensive Quality Management System, Environmental Management System, plus a Occupational Health and Safety Management System.

Training at all levels is also a key part of our commitment to health, safety, and environmental protection with routine safety meetings, briefings, and investigations into both incidents and near misses. As a minimum all supervisory staff will hold Cert III or Cert IV in drilling operations.

Full risk assessments and method statements will be drawn up for all site activities, and staff who will be involved with a specific activity will be briefed on the key features of the activity. All staff will have access to the health and safety file held on-site and in the office.

Our goal is to achieve an accident-free workplace and our objective is to minimise the incidence of occupational accidents, illnesses, and near-misses.

In order to achieve this, we will implement the following:

- **Provide all employees with necessary equipment, PPE, information, training, and supervision.**
- **Recognise our duty to protect the health and safety of all visitors, including contractors and temporary employees and any other persons, including members of the public, who may be affected by our operations.**
- **Make all employees and sub-contractors aware that health and safety is the responsibility of every person associated with the company, that it is their duty to take reasonable care of their own, and other people's safety and welfare, and to report any situation which may pose a threat to that safety and welfare.**
- **Ensure that all accidents are reported and fully investigated without delay. Lessons learned are swiftly conveyed to relevant staff.**
- **Provide effective communication channels to facilitate the timely, multi-way exchange of relevant information and advice, with access to guidance and documentation.**
- **Recognise that a safety mindset is as important as providing safe systems of work and operate a zero-tolerance disciplinary policy.**
- **Maintain a quality Environmental and Health and Safety Plan, Continuous Improvement Plan and Environment Management Policy.**

# DRILLING RIGS

## SUPPORT VEHICLES & EQUIPMENT

PDA drill rigs, support vehicles and equipment, undergo daily pre-start checks and thorough service inspections. All plant and equipment are well maintained, serviced, carry sufficient spare parts and meet all mining specifications.

PDA offers multiple combinations of drill rigs and support vehicles, either wheel or track based, plus we have 3 drill rigs that are all Hydra Power Scout-V.

All of PDA's rigs have an attachment that supplies GPS / RL of each hole location with an accuracy of up to .4m, in any location within Australia. Available to every client at \$70 per/ hole, with notice of intent to use prior to the program.



### PDR01 & PDR04

Medium size Yanmar Track drill rig with an extra mast extension (capable of pulling 12m SPT in one pull). It has the capability to drill PQ, HQ, NQ diamond drilling with SPT/ U-tube sampling, mud rotary, solid and hollow flight augers and Air Core/ RAB. It is mounted with W11 bean pump for coring and a centrifugal pump for larger diameter mud rotary holes.



### PDR02 & PDR03

Truck mounted drilling rigs have the capability to drill PQ, HQ, NQ diamond drilling with SPT/ U-tube sampling, mud rotary, solid and hollow flight augers and Air Core/ RAB. It is mounted with W11 bean pump for coring and a mono pump for larger diameter mud rotary holes.

### PDA has a range of other vehicles, support equipment and auxiliary equipment to help on site such as:

- Toyota Hilux support LV full mine spec x2
- Transportation trucks varied 6 pallet to 14 pallet
- Semi trailer with drop deck ramps
- 12 Ton Cat 432F backhoe
- 7 Ton JCB 2CX backhoe
- 2x grout trailers with generators and mixing bowls
- Track mounted support carrier for those boggy conditions
- Multiple size compressors
- Auxiliary pumps
- 5.5 ton Kubota excavator
- 9 ton Kubota excavator

### We can also supply testing and installations:

- Packer testing single and straddle
- Falling and rising head testing
- Vibrating wire piezometer
- Standard penetration testing
- Piezometer installation
- Inclinometers
- Extensometers
- Monitoring wells
- Remediation
- In-situ instrument installation
- Piston sampling
- Thin walled (shelby tubes) - u50, u63, u75, u100



**PRECISION**  
DRILLING AUSTRALIA



 Managing Director: Mathew Feeney  
e: [precisiondrillingaustralia@gmail.com](mailto:precisiondrillingaustralia@gmail.com)  
m: 0425 479 150

 Operations Manager: Ryan Wilhelm  
e: [precisiondrillingaustralia@gmail.com](mailto:precisiondrillingaustralia@gmail.com)  
m: 0499 304 871

a: 240 Clayton Road, Helena Valley, WA 6056 | [www.precisiondrillingaustralia.com.au](http://www.precisiondrillingaustralia.com.au)